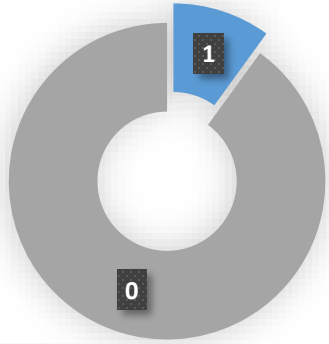




Complaints



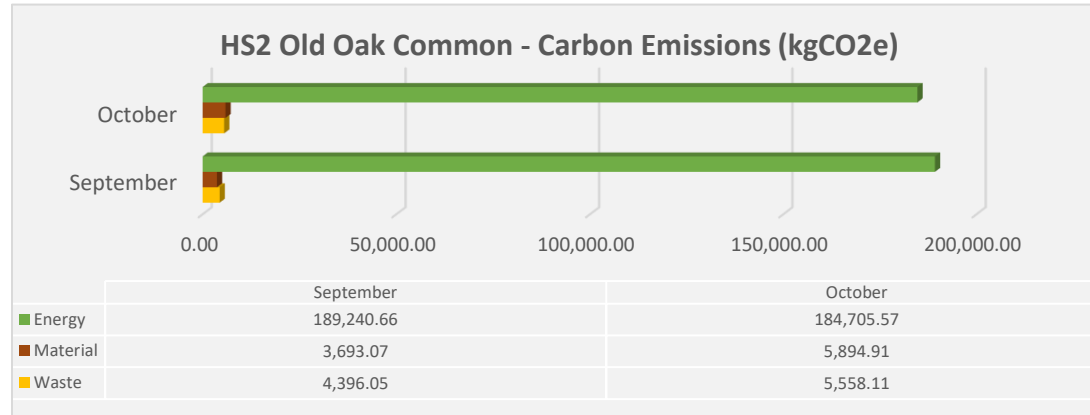
Complaints

Compliments

Complaint 06/10 – from the Collective – litter left around the Simply Fresh store – warning that contractors cannot eat, drink or smoke in car park area. To be included in daily briefing.



CO2 Emissions



kgCO2e Energy - from fuel usage (gas oil)
 kgCO2e Material - from timber usage



Landfill Diversion

✓ 98%

Currently on track to attain BREEAM 2018 Innovation credit.



CCS (industry average 34/50)

Date	Score	Overall feedback comment
CCS Second visit 26/10	43/50	Further promotion of the project environmental targets and achievements to be undertaken.



CSR Initiatives

Date	Event	Information
October 2021	Canal & Rivers Trust volunteering 27/10	Litter pick around canals. Volunteers outside of environment team needed.



Site Metrics



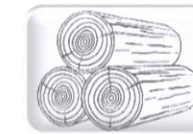
Waste



NVD



Energy



Timber