

Environment & Sustainability Management

Environmental Management System



Tamil Uddin
Environmental & Sustainability Manager

“McGee’s Environmental Management System is ISO 14001:2015 accredited and will be carried out to comply with the project management system, policies and procedures throughout the duration of the project.

McGee will prepare an Environmental Management Plan will ensure the environmental policies and procedures are carried through to site level.

Environment Impacts Best Practice

In addition to McGee’s standard Construction Environmental Management Plan (EMP) we will also adopt the Greater London Authorities Best Practise Guide for control of dust and emissions as a minimum standard.

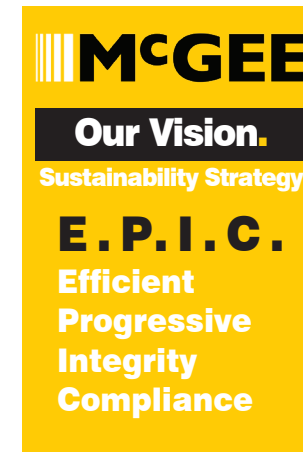
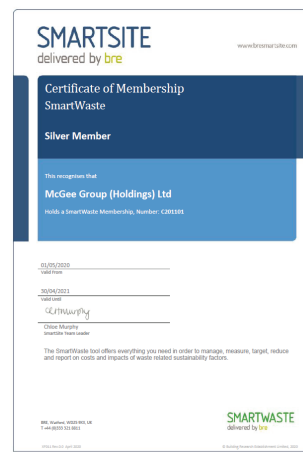
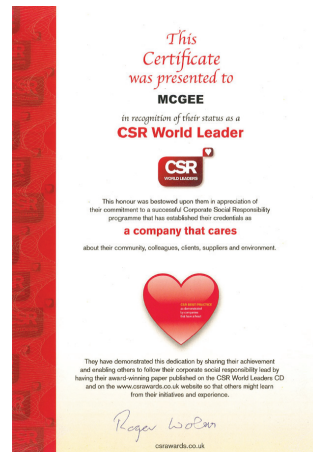
A bespoke project EMP will be produced with reference and guidance from Westminster’s Code of Construction Practice to ensure compliance and demonstrate best practice.

The site appointed Sustainability Champion will ensure that the impacts of construction are managed and to ensure that any negative effect of such work on the environment and amenity is minimised. Furthermore, the assigned sustainability champion will lead on educating the workforce on matters relating to air quality through discussions and one to one training.

Meeting Environ, Sustainability & Community Requirements

McGee will ensure that the company complies with appropriate legislation and regulations by Identifying and evaluating the environmental aspects associated with all legal and contractual agreements in order to control and reduce any environmental impact. The project will be registered with the Considerate Constructors Scheme and will undergo two site audits by the scheme’s monitors during the registration. The site will aim for a high score of 40+/50 which is also an opportunity for an additional innovation BREEAM credit.

McGee will work with the local community engaging in various schemes where applicable whilst encouraging reuse of waste materials and working with local social enterprises.”



Carbon Reduction Commitment

As part of Our Vision at McGee, we are committed to embed sustainability throughout our business particularly focussing on reducing our GHG Scope 1, 2 and 3 emissions.

Through a self-delivery approach on all projects we are able to provide a transparent evidence trail of carbon emissions directly to our clients without the need of lengthy supply chain charters as we work with a limited number of sub-contractors as part of our offering.

Leading the industry whilst working intelligently to build better and smarter we are adopting the framework of PAS 2080 Carbon Management in Infrastructure through an internally conducted gap analysis and working towards verification with BSI.

As part of our ongoing commitment working towards net zero carbon, below are some of the steps we are taking to demonstrate measures and best practice we are adopting:

- Increasing our sign up to Green Energy tariffs during all phases of works.
- Establishing better and broadening our engagements with Local Social Enterprise schemes.
- Working with our existing supply chain to reduce and limit packaging waste.
- Encouraging Circular Economy in all parts our business.
- Implementing Carbon Reduction Plans across our projects discussing opportunities and implementing best practice.
- Reducing our carbon emissions from plant, machinery and vehicles by monitoring telematics data and trend analysis.
- Exploring alternative fuels and upgrading existing fleet with hybrid and battery powered options.

Core construction materials such as steel and concrete form a large part of our operations thus account for a large proportion of a buildings embodied carbon.

We are always striving to find alternative designs and efficient methodology techniques to reduce the impact wherever possible.

Using BIM and our internal database of carbon data we are able to project carbon outputs in advance to tackle design and methodology decisions.

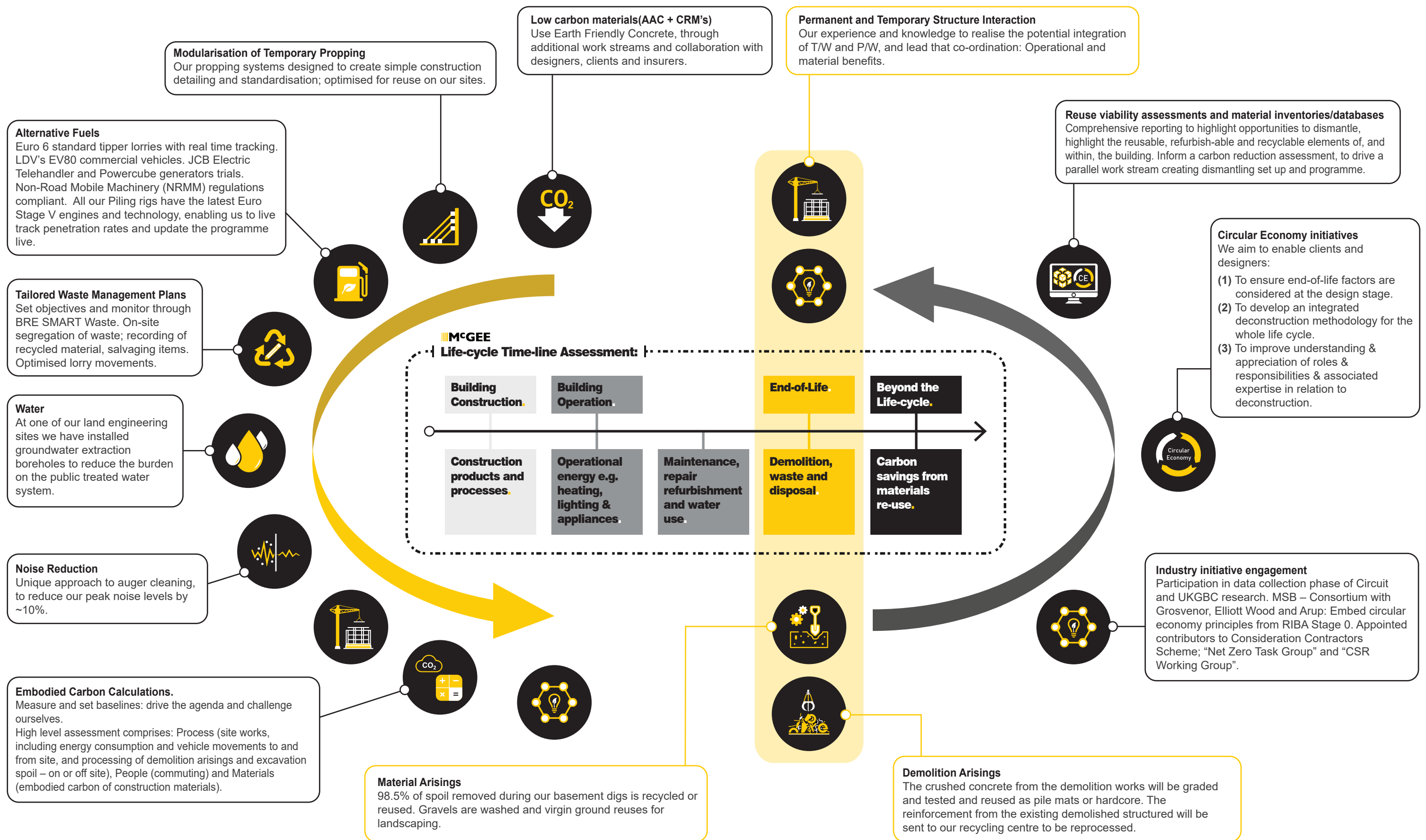
Waste management is a key operational aspect of our business and we aim for a high recycled target of 99% achieving this figure on year on year.

Where appropriate we are able to carry out waste operations on site moving our plant and machinery to crush material reducing tipper lorry movements and ultimately reducing the site carbon footprint.

As McGee look to the future we look forward to working with our clients on a project by project basis to meet their individual sustainability strategy in net zero carbon. We envisage working with our clients and their respective partners in tackling carbon reduction on every project.

Environment & Sustainability Management

McGee's Legacy in the Life-Cycle of a Structure



Sustainability Implemented

What makes us different?

Beyond our hoardings, we are committed to acting responsibly in all we do and have an award-winning focus on sustainability.

Our family values drive us to enrich the communities within which we work. And as a Considerate Constructor, we're proud to improve the image of construction through;

- Community initiatives;
- Employee health & well-being programmes;
- Environmental projects, and campaigns;
- Employment and work experience opportunities;
- Volunteering;
- Cycle safety and school events, and;
- Working with University students to seek fresh, new ideas for the benefit of all.

Within the following pages you will see a snapshot of our work that has seen us actively contributing to the communities within which we work, showing that we genuinely care for employees, that we engage with local people and business, as well as the industry as a whole - demonstrating that we deliver what we promise!

SOCIAL.

- Support & Nurture the next Generation.
- Community Engagement Initiatives.
- Support Local Charities.
- Work with Local Boroughs on Key Initiatives.



- Responsible / Accessible Design.
- Local Procurement.
- Local Employment.
- Ethical Business Practices.



ECONOMIC.

- Job Creation.
- Early Learning Opportunities.
- Education Engagement.
- Employee Continuous Professional Development.
- Promotion of Health & Well-being.
- Workplace Equality, Diversity, Fairness, Inclusion & Respect.
- Inclusion Procurement.
- Prompt & Fair Payment to Supply Chain.

ENVIRONMENTAL.

- Air Quality.
- Noise Management.
- Disruption Management.



WE ARE CONSIDERATE

As award-winning Considerate Constructors, we take immense pride in improving the image of construction.

We actively contribute to the communities within which we work. From delivering in-house elite Traffic Marshal training, and taking pride in the appearance of our sites, both internally and externally. We champion new initiatives in conjunction with local stakeholders such as supporting the City of London's air quality campaigns, and trialling the latest digital signage for Transport for London to assist partially sighted people orientate around our works safely.

All our sites are registered with the Considerate Constructors Scheme (CCS) and on average our sites receive a CCS Score of 44/50 - which is an award-winning performance!



WE INNOVATE

In a fast-moving industry its vital to explore innovative approaches and new methodologies.

We have a long history of innovations and we're proud to be equipped to embrace the challenges of the 21st century head on.

This is embodied by our integrated delivery business model.



WE CARE

We collaborate with the community to help with important local initiatives. Our in-house Social Responsibility team ensures that hearts and minds of the communities we work in are at the forefront of our plans.

Whether we're leading a cycle safety initiative, or considering how to reduce our impact on the environment, we are proud to be playing our part.



Environment & Sustainability Management

Achieving BREEAM Excellent

McGee aim to meet the **BREEAM Excellent** requirements for most projects and achieve the applicable targeted credits. McGee are ISO accredited and hold 14001:2015, 9001:2015 & OHSAS 18001 and undergo audits by BM Trada to maintain its high standards and accreditations.

All site information will be recorded using an **environmental/BREEAM recording tool** that is updated throughout the project which captures all of the required data such as waste (T), water usage (m3), electricity (kW), Diesel (litres), carbon footprint (kg/Co2e), timber usage (T/m3) and vehicle movements to and from site. Targets are set accordingly and reduction methods are introduced in line with McGee's environmental objectives.

The site will work in accordance to a **bespoke Site Waste Management Plan** which aims to reduce the amount of waste generated. Any resulting waste will be managed in adherence to the waste hierarchy. A pre demolition audit is also undertaken to provide the forecast tonnages and proposed waste management actions for each waste stream, such as reuse, recycling, recovery and disposal.

Waste is recorded using BRE Smart-waste which monitors the waste diversion %. McGee currently averages a 98% waste diverted from landfill and aim to meet that target by ensuring efforts are focused on the opportunities to reduce, reuse and recycle waste by exploring local community schemes. **A waste champion will be nominated by McGee** to ensure the site is complying with the site waste management plan.

As part of **McGee's Sustainable Timber Policy**, timber will only be procured from approved FSC timber suppliers. McGee will ensure that the supply of FSC material is monitored and recorded, providing absolute traceability throughout the construction process. McGee are able to demonstrate its commitment to responsible forestry through accreditation to the FSC Chain of Custody Certification.

Responsible procurement of steel and concrete ensures that materials sourced from approved suppliers who provide high recycled content and are able to provide evidence of their Environmental Management System or ISO 14001 / BES 6001 certification. All evidence and certifications are recorded and included in an Environmental close out report which is issued upon project completion.

Onsite compliance is managed by the Environmental Manager who will ensure best practice pollution prevention measures are in place in accordance to the relevant regulations. A McGee Emergency Spill Plan and Environmental Management Plan will be adhered to and communicated throughout the site team.

In addition, COSHH materials will be stored safely in a designated area in secure bunded containers with spill kits. Hazardous waste will be collected by specialist contractors and all consignment notes are recorded and included in the Environmental close out report.

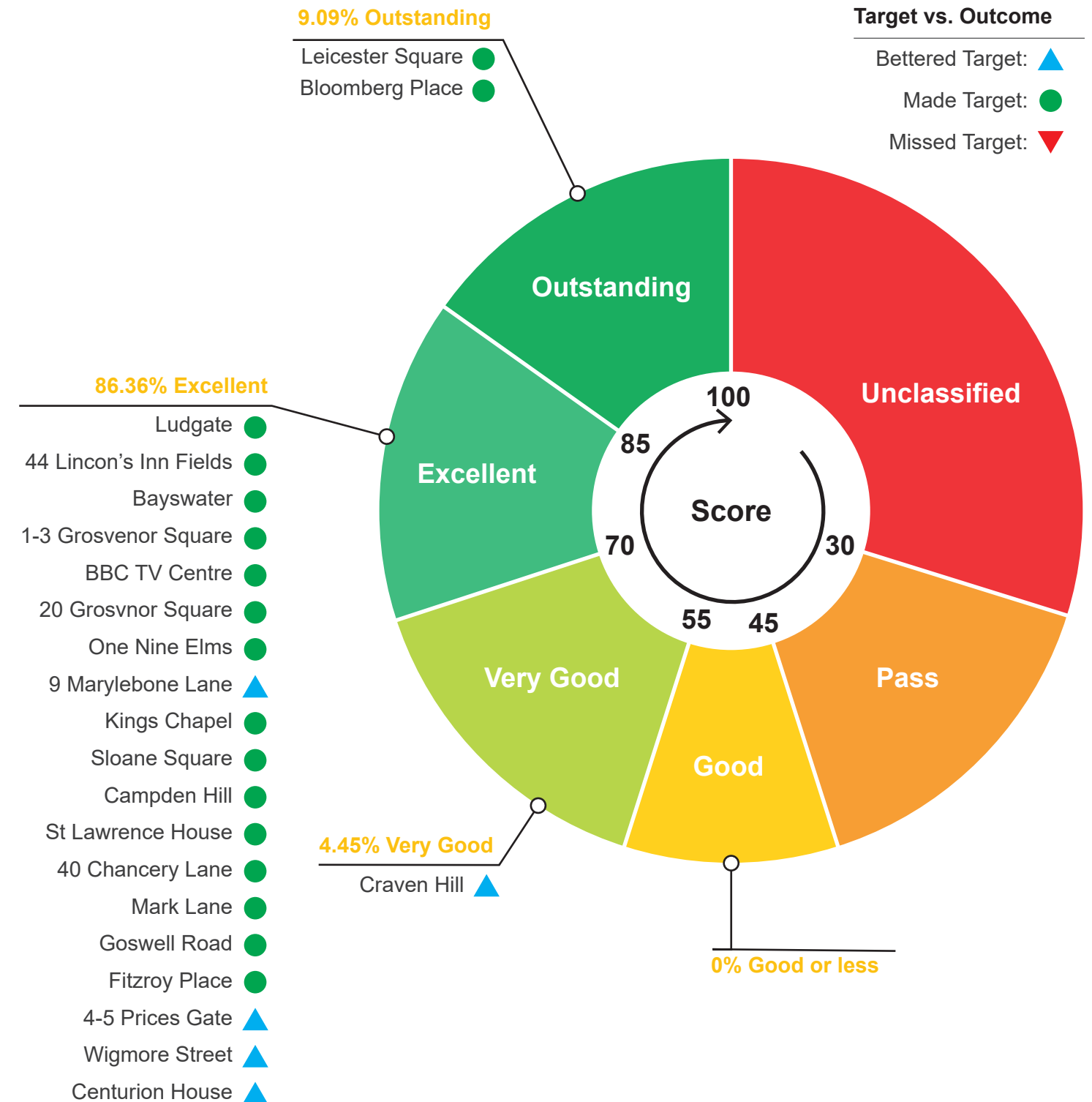
Environmental training will be provided by the EM which covers a variety of topics such as spill awareness, FSC Timber, waste and NRMM. Environmental toolbox talks will be completed each month which covers topics relevant to the phase of works including seasonal and stakeholder related risks.

The project will be **registered to the Considerate Constructors Scheme** and will undergo two audits during the registration and marked a score out of 50. McGee aims to score over 40/50 and have been consistent in doing so with many of its sites being awarded Gold, Silver and Bronze at the annual CCS National Site Awards in recent years.

BREEAM Recent Score Chart

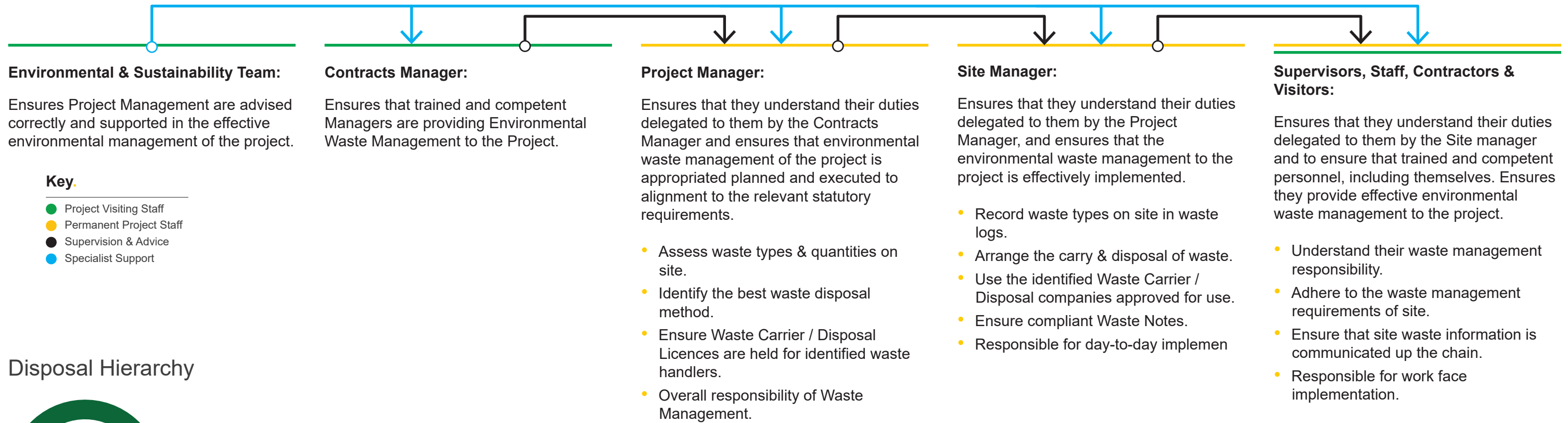
McGee Group has extensive experience of working on projects that require certification to BREEAM.

Projects have subsequently been able to achieve BREEAM Excellent and beyond with data and information supplied by McGee.

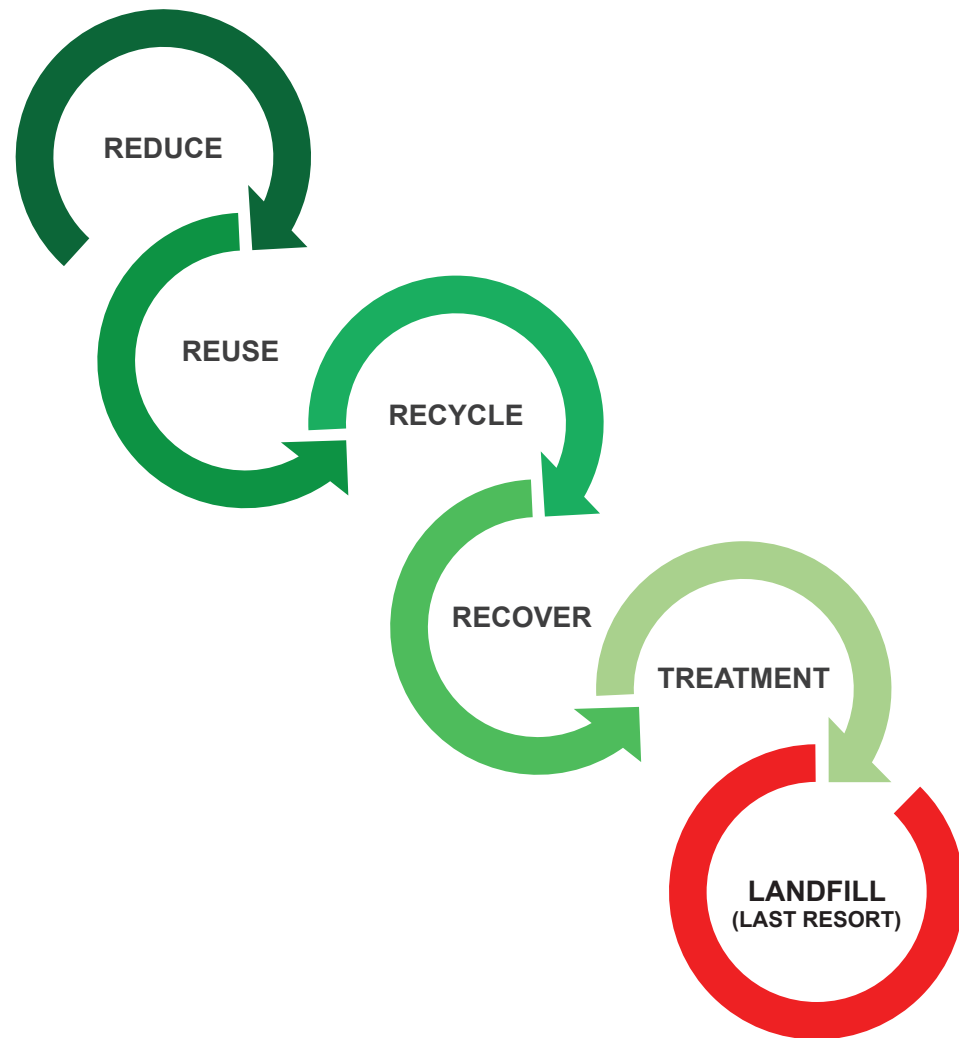


Environment & Sustainability Management

Sustainability & Recycling Responsibility



Disposal Hierarchy

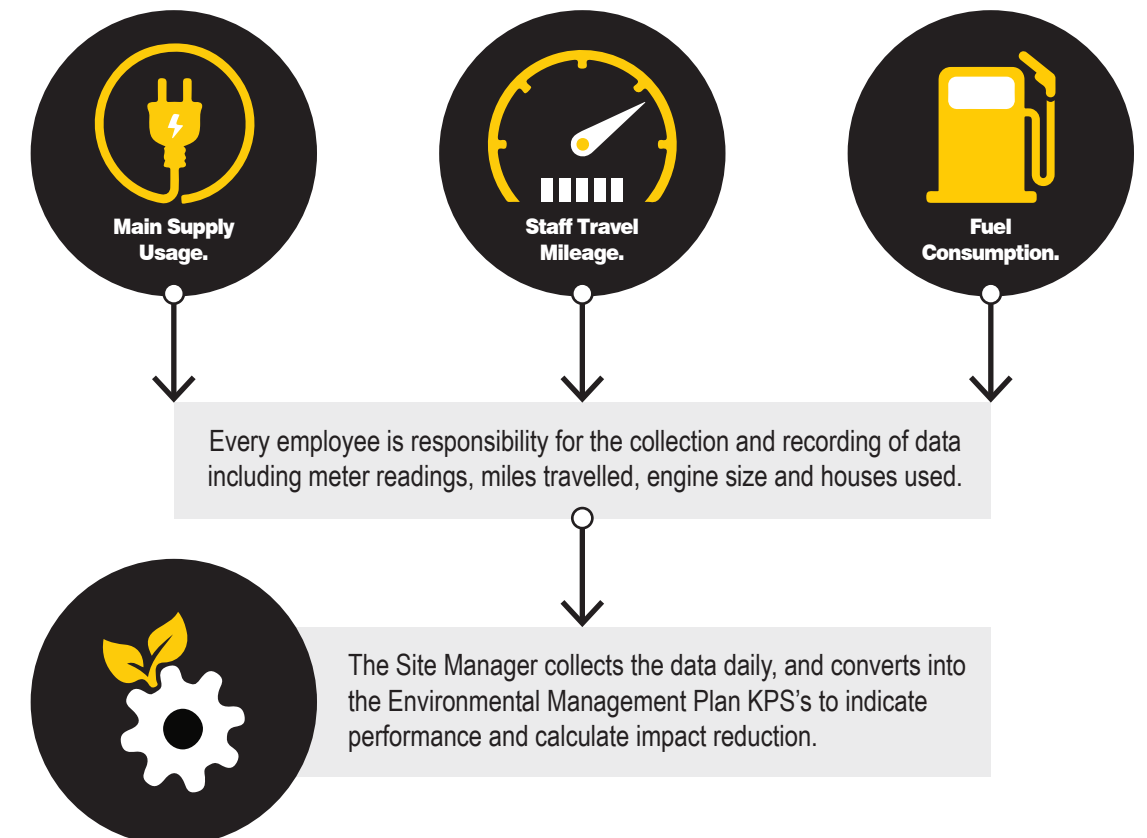


Carbon Data

KPIs to Monitor and Report the Environmental and Sustainability Performance

KPIs such as energy usage, diesel usage, water usage and total carbon produced are used to measure the Environmental performance on each project in line with BREEAM/LEED requirements or other Environmental Assessment method.

The totals are published in monthly progress reports and issued to the client and site management.



Environment & Sustainability Management

Recycling Strategy & Sustainability

In compliance with McGee’s environmental objectives a strategy for waste reduction, reuse and recycling will be devised for the project. Part of the implementation of this strategy is the preparation of a Site Waste Management Plan.

The Site Waste Management Plan will be prepared, maintained and completed by McGee as Principle Contractor in accordance with the SWMP Regulations.

McGee will provide month by month data required to complete the Site Waste Management Plan via the ‘Project Environmental Requirements Monitoring Summary sheet’.

These are also based on BREEAM requirements and have previously aided our client’s aims to achieve a rating of ‘Excellent’.

Waste data shall be preferably collected and recorded by weight to improve accuracy as all loads of metals and mixed construction rubbish are weighted at the recycling station. Data can be also collected by volume if required to maintain consistency with records kept by other contractors for the duration of the project.

Whatever the market conditions McGee can guarantee removal of concrete and hard-core from central London sites quickly and efficiently, in addition to supplying recycled material.

Using site specific operating procedures we are able to provide a detailed description of protocols undertaken for this type of project and full transparency of methods. Traceability of associated documentation is achieved through rigorous document control and internal auditing.

Roles and responsibilities are assigned to all personnel to ensure appropriate reporting is conducted to the Environment Agency as applicable, and in accordance with the associated waste exemption certificate.



Environment & Sustainability Management

Sustainable Fleet

McGee looks to the future with the all-electric LDV V80

McGee has future-proofed its business after becoming the first construction company in the UK to introduce LDV's EV80 to its fleet of vans.

The EV80 is the first electric van that McGee has invested in. The company also has a policy which enables employees to select vehicles from electric or hybrid manufacturers, which has been in place since 2014 and illustrates the team's commitment to going green.

LDV's EV80 is the first in a new generation of cleaner, alternative fuel vehicles and offers energy efficiency, stronger power, and an enhanced eco-friendly performance. It is the first electric vehicle launched as part of the LDV's range of commercial vehicles.

Launched in 2016, the EV80 boasts a 120-mile range on a single charge thanks to the high-capacity lithium battery which can be fully charged in less than 90 minutes.

Ideal for city driving, the EV80 is already being used by delivery and utility companies, together with selected city councils all over the UK.

For drivers, the EV80 features Digital Intelligent CVT, which adjusts the torque and output power of the motor under different conditions to create a smoother driving experience.

Currently, LDV is one of very few Original Equipment Manufacturers (OEM) in the UK that can arrange immediate delivery of a large size EV van, EV panel van, minibus, chassis cab and crew variant, regardless of order number.

The EV80 is part of the Go Ultra Low grant scheme, a government initiative to encourage drivers to switch to low emissions vehicles.

